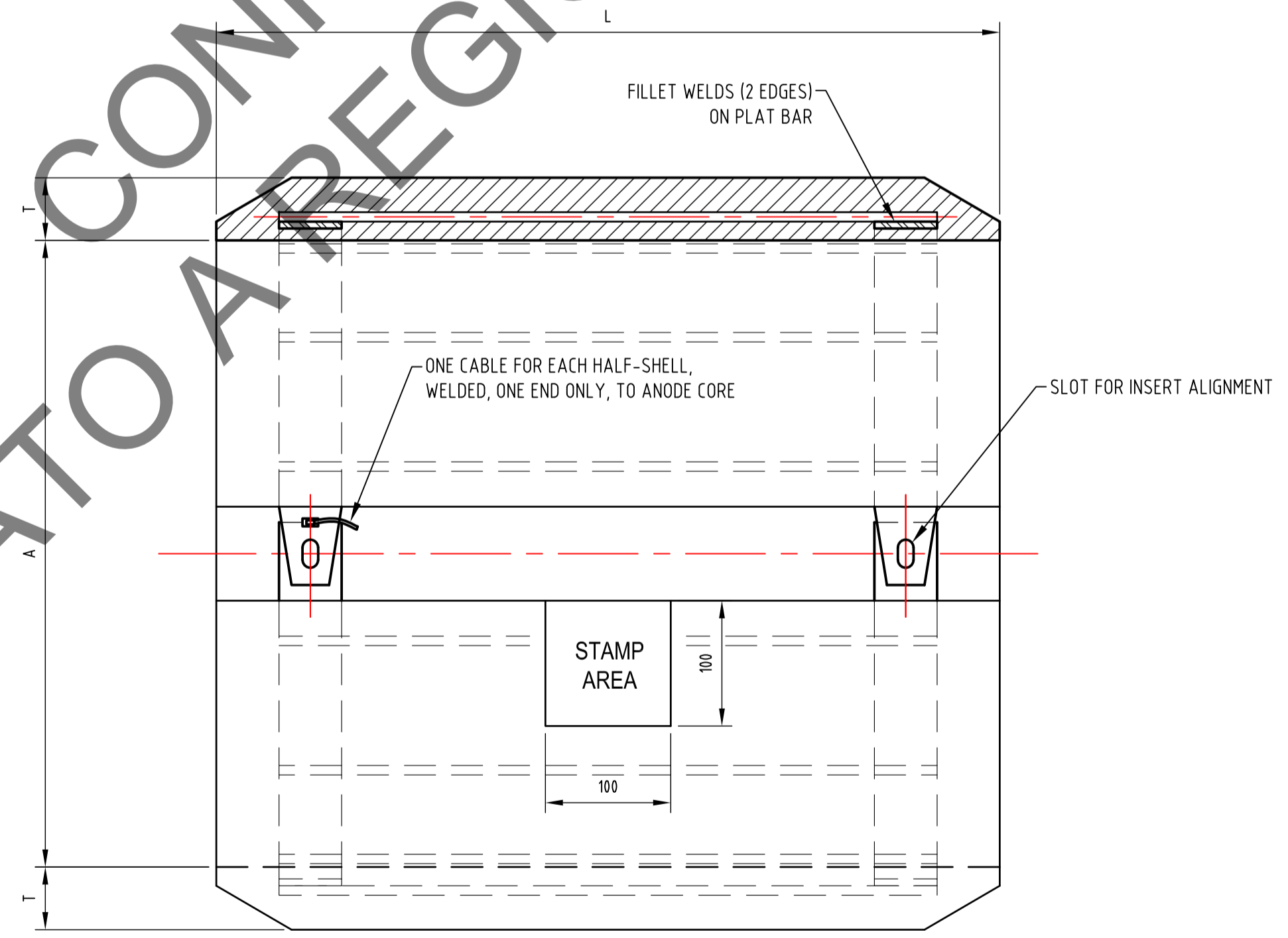
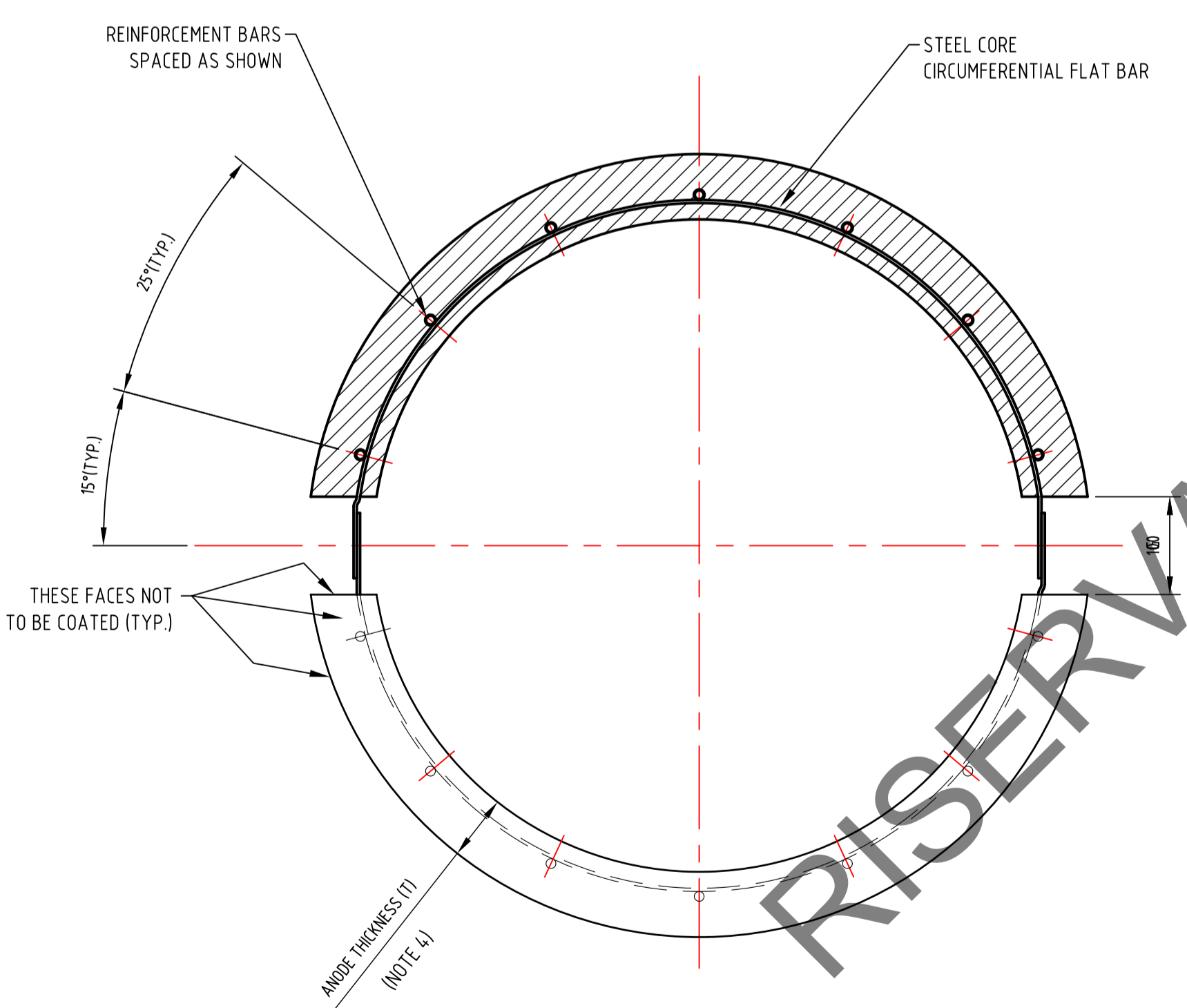


ANODE TYPE (NOTE 5 & 6)	LENGTH (L) [mm] (NOTE 5)	THICKNESS (T) [mm] (NOTE 5)	O.D. OF COATED PIPE (A) [mm]	MIN. NET ANODE MASS [kg] (NOTE 5)
S-6-32	500	45	818.8	136
S-7-32	500	65	818.8	207
S-8-32	500	85	818.8	270
S-9-32	500	105	818.8	351
S-10-32	600	115	818.8	466

ANODE CONFIGURATION FOR CONCRETE COATED PIPE



ANODE TYPE (NOTE 5 & 6)	LENGTH (L) [mm] (NOTE 5)	THICKNESS (T) [mm] (NOTE 5)	O.D. OF COATED PIPE (A) [mm]	MIN. NET ANODE MASS [kg] (NOTE 5)
T-3-32	500	40	818.8	130

ANODE CONFIGURATION FOR PIPE WITHOUT CONCRETE COATING

NOTES

- ALL DIMENSIONS ARE IN MILLIMETERS, UNLESS NOTED OTHERWISE.
- ALL SHARP EDGES FACING THE PIPE SHALL BE MECHANICALLY BEVELLED, WHEN NEEDED.
- ANODE MATERIAL SHALL BE ALUMINIUM BASED.
- ANODE THICKNESS SHALL SATISFY BELOW CRITERIA:
 - WHEN NO CONCRETE WEIGHT COATING IS PRESENT THE MINIMUM ANODE THICKNESS IS 40mm.
 - WHEN CONCRETE WEIGHT COATING IS PRESENT, ANODES SHALL BE FLUSH WITH CONCRETE SURFACE (ANODE THICKNESS = CWC THICKNESS - 5mm).
- SEE REPORT IGI-1309-30-PL-CAL-001 CATHODIC PROTECTION DESIGN FOR FULL DETAILS.
- FOR SELECTED ANODE DIMENSIONS AND QUANTITIES, REFERENCE IS MADE TO THE PIPELINE COMPONENT MATERIAL TAKE-OFF (IGI-1207-10-PL-MTO-001).

RISERVATO A REGIONE PUGLIA 3/5/2019

REV	DATE	DESCRIPTION	DRWN	DSGN	ENGR	APPR	CLIENT
Y1	31 JAN 2019	APPROVED FOR USE		SM	AT	AT	MVV
Y0	15 JAN 2019	ISSUED FOR CLIENT REVIEW		SM	AT	AT	MVV
YA	14 JAN 2019	ISSUED FOR INTERNAL REVIEW		SM	AT	AT	

INTECSEA
WorleyParsons Group

PROJECT: IGI POSEIDON - OFFSHORE SECTION UPDATE

CLIENT: IGI Poseidon

Project No.: 406010-00159
WBS Code: 10.10.20 (FEED Deliverables)
EDISON Doc. No.:
DEPA Doc. No.:

IGI Poseidon

TITLE: ANODE GENERAL ARRANGEMENT DRAWING (ITALIAN SECTION)

DRAWN BY: FAK	DATE: 14 JAN 2019	CHECKED BY: AT	DATE: 31 JAN 2019	APPROVED BY: MVV	DATE: 31 JAN 2019	SHEET: 1 OF 1
SCALE AT 'A1' SIZE: N.T.S.	PROJECT: IGI	CTR: 1309	AREA: 30	DISCIPLINE: PL	TYPE: DWG	NUMBER: 001
						REVISION: Y1